

MEDICAL brochure

NURSE CALL SYSTEM



NURSE EMERGENCY CALL SYSTEM

Office: Jalan Gondang Raya 20B, Gondang sari
Condong Catur Sleman Yogyakarta Telp (0274)887347
Workshop : Jl Kaliurang Km 7.8 Perum Banteng 3
Jl Merapi 49 Phone: +62856 4328 7760



NURSE EMERGENCY CALL SYSTEM



SOFTWARE SERVER

Pemberitahuan dalam BERBAGAI JENIS jenis (dapat disesuaikan) +
Pemberitahuan dilakukan dalam sistem antri
Manajemen Ruangan
Manajemen Tempat Tidur
Manajemen Administrator

HARDWARE CALLER

Case : Acrilyc Flatbed
Sound : Monophonic Buz
WLAN : Wi-Fi 802.11 b/g/n
Operating Voltage Range (V) : 4.5 to 5.5V
Temperature Range © : -20 to 80
CPU Speed (MIPS) : 16MHz
EEPROM (bytes) :1024

HARDWARE SERVER

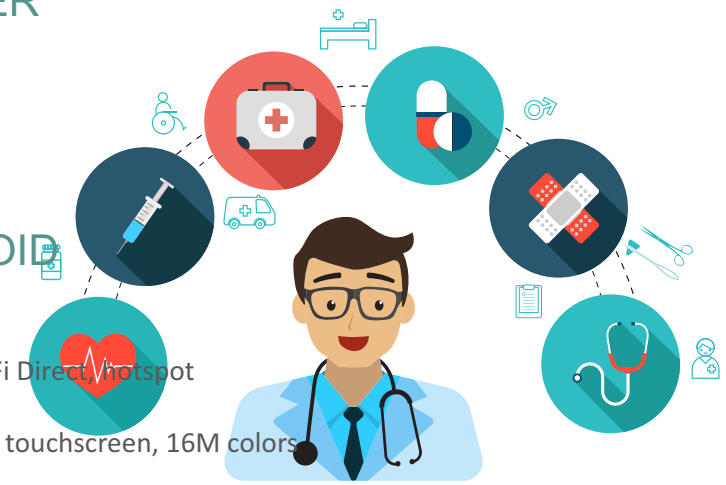
Operating System : Raspbian
Kernel System version : 4
Webserver : Apache
Database : MySQL
Component : PHP 7

HARDWARE ANDROID

Android Version : 4.4.4 (Kitkat)
Kernel version 3.1.0
WLAN : Wi-Fi 802.11 b/g/n, Wi-Fi Direct, hotspot
Bluetooth : 4.0, A2DP, LE
Display Type : IPS LCD capacitive touchscreen, 16M colors

COMPONENT

- SERVER
- REPEATER
- ROOM CALLER
- BED CALLER
- TOILET CALLER



NURSE CALL SYSTEM

JT CV Jinalun Tech

